

Berlin-based artist Ruth Biller's "Selvage of Time" at Anna Laudel
Düsseldorf



Greenhouse (2021).

Anna Laudel Düsseldorf is set to showcase the masterful works of renowned artist Ruth Biller for the second time. Her solo exhibition, "Selvage of Time" runs till April 20, 2024.

Ruth Biller employs the human body, nature, and landscapes as focal points in her artistic endeavors, emphasizing exploring space. Biller captures her creative vision and distinct approach to painting and pictorial design for this exhibition.

The name of the exhibition, "Selvage of Time", refers to the fabric-like quality of her paintings and the delicate, organic structures she expertly crafts in her pieces. Through her luminous brushwork, Biller orchestrates a symphony of free-flowing forms and ornamental

Berlin-based artist Ruth Biller's "Selvage of Time" at Anna Laudel
Düsseldorf

fraying, intricately interweaving her pictorial spaces to create a truly singular visual experience.

Ruth Biller encapsulates her artistic philosophy and inspirations in a poignant quote: "In the baggage of seeing, I discover the imprint of time spent in other places, like a table set with the smells of unfamiliar paths, glasses filled with wanderlust." The surface of her artworks appears fragmented, with bodies and gestures seemingly displaced from time, ensconced in a fluid interplay of spatiality and nuanced colors. From a myriad of personal impressions and inspirations to choreographing her creations, Biller evolves new interweavings and compositions of dance formations, snapshots of current events, and personal experiences that serve as wellsprings of inspiration.

In her paintings and prints, vibrant rhythmic rows of images emerge on both canvas and paper, brought to life through intricate layers of color and spatial overlays. This technique adds depth to her creations and imparts a variable and nuanced quality to the visual narrative she weaves. Working on her artistic expression based in Berlin, Germany, Biller's artistic studio and home serve as the epicenter for her creative pursuits and the birthplace of the captivating interplay between human form, nature, and the ever-expansive concept of space in her work.

Ruth Biller employs the human body, nature, and landscapes as focal points in her artistic endeavours, emphasizing exploring space.

Berlin-based artist Ruth Biller's "Selvage of Time" at Anna Laudel
Düsseldorf



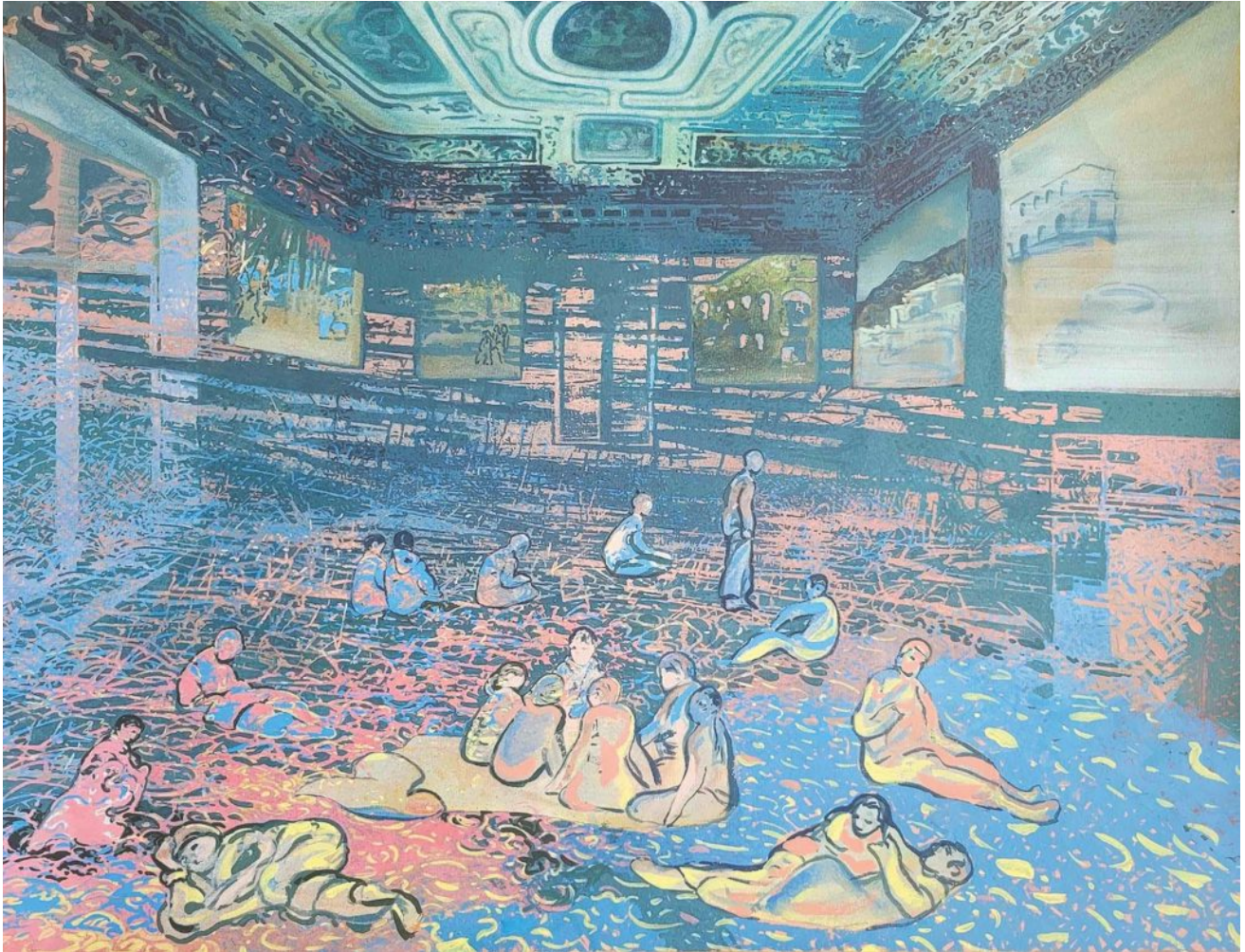
Berlin-based artist Ruth Biller's "Selvage of Time" at Anna Laudel
Düsseldorf

East (2021).



Embroidered Message (2022).

Berlin-based artist Ruth Biller's "Selvage of Time" at Anna Laudel
Düsseldorf



Placeless Distance.

Berlin-based artist Ruth Biller's "Selvage of Time" at Anna Laudel
Düsseldorf



Selvage of Time (2022).