

Jaipur's Gyan Museum showcases Andrew Horsfall's artistic
exploration of societal constructs and contradictions

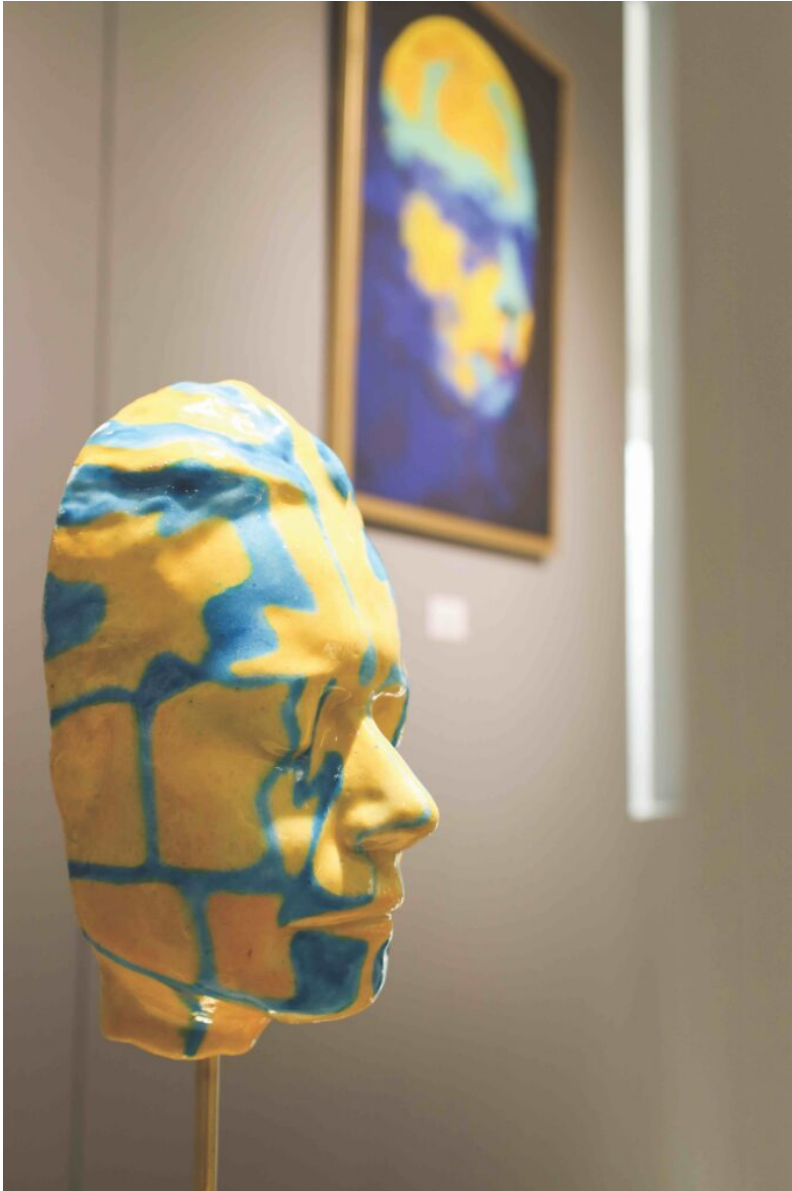
Jaipur's Gyan Museum showcases Andrew Horsfall's artistic exploration of societal constructs and contradictions

Posted on

The Andrew Horsfall retrospective, on view through May 30, 2025, celebrates the Gyan Museum's Commitment to Preserving Artistic Legacies.

Photography Gyan Museum.

Jaipur's Gyan Museum showcases Andrew Horsfall's artistic exploration of societal constructs and contradictions



The Gyan Museum, showcasing the private collection of Gyan Chand Ji Dhaddha (1940-2004), is hosting an exhibition of renowned British sculptor Andrew Horsfall's work. Highlighting the evolution of Horsfall's artistry across various mediums, the exhibition runs until May 30, 2025, in the museum's 750 sq. ft. gallery in Jaipur.

"The exhibition celebrates 25 years of Andrew Horsfall's artistic journey, highlighting his expertise in bronze and sandstone. His notable works, such as the 'Beggar Series' and 'Bone Heads,' explore themes of victimization and egoism. The 'Break the Glass' series, featuring gems and precious metals, reflects his experiences as a father and addresses youth

Jaipur's Gyan Museum showcases Andrew Horsfall's artistic exploration of societal constructs and contradictions | 2

Jaipur's Gyan Museum showcases Andrew Horsfall's artistic exploration of societal constructs and contradictions

challenges.



Crux Gamati by Andrew Horsfall.

Jaipur's Gyan Museum showcases Andrew Horsfall's artistic exploration of societal constructs and contradictions



A selection of digital portraits and masks.

Jaipur's Gyan Museum showcases Andrew Horsfall's artistic exploration of societal constructs and contradictions



Ego is Hunger.

Jaipur's Gyan Museum showcases Andrew Horsfall's artistic exploration of societal constructs and contradictions



A selection of digital portraits and sculptures.

It also showcases his new digital portraits and 3D-sculpted blue pottery masks, demonstrating his evolving artistry,” says Arun Dhaddha, Director of the Gyan Museum.

The Gyan Museum in Rajasthan honors Gyan Chand Ji Dhaddha (1940–2004), a passionate collector and gemologist. With over 2,500 pieces spanning 3,000 years, it serves as a gateway to history and artistry. The exhibition of Andrew Horsfall’s work reflects the museum’s dedication to creative mastery. Since moving to Jaipur in 2020, Horsfall has deepened his exploration of Rajasthan’s rich traditions.

Horsfall’s artistic practice is deeply rooted in his lifelong dedication to sculpture and drawing, with a profound connection to the materials he works with. His relocation to Jaipur has allowed him to embrace new inspiration, pushing the boundaries of both traditional and contemporary artistic mediums.

The Andrew Horsfall exhibition at the Gyan Museum explores the complexities of human experience and societal constructs through themes of resilience, exploitation, and identity. The piece ‘Metamorphic Crux’ presents a deconstructed cross, encouraging reflection on the evolving nature of belief. ‘Gloria,’ a bronze figure, symbolizes resilience and hope amid

Jaipur's Gyan Museum showcases Andrew Horsfall's artistic exploration of societal constructs and contradictions

devastation.

'Eggo Seed' captures the struggle for survival, referencing Darwinian competition as it seeks sunlight. In the 'Beggar Series,' consisting of 'Ego is Hunger,' 'Money Monster,' and 'Beggar 3,' the sculptures critique the ethics of giving and receiving, revealing the duality of begging where survival and manipulation intertwine. 'Ego is Hunger' reflects the paradox of value in suffering, while the 'Money Monster' thrives on despair, providing a grotesque essentiality.

Horsfall's 'Break the Glass to Play' critiques modern parenting by highlighting how overprotection affects childhood. The seven-piece series, made with bronze, silver, gold, and precious stones, symbolizes the constraints of a cautious society with pieces named Autocrat, Predator, Mental Health, Sexual Harassment, Rebellion, Obesity, and Narcissism, prompting discussion on safety versus experiential learning. Additionally, Horsfall's 19-piece series of Masks, a contemporary take on Jaipur's blue pottery, uses 3D scanning to preserve individual identities, blending tradition with modern techniques. Masks can be commissioned in bronze or precious stones, reflecting heritage, nature, and innovation.

Jaipur's Gyan Museum showcases Andrew Horsfall's artistic exploration of societal constructs and contradictions



Metamorphic Crux.

Jaipur's Gyan Museum showcases Andrew Horsfall's artistic exploration of societal constructs and contradictions



Money Monster.

Jaipur's Gyan Museum showcases Andrew Horsfall's artistic exploration of societal constructs and contradictions



Slow Traveller.