



Conceptual sketches to visualize textures and pattern placements.

The exhibition titled 'Pottu: A Journey of Constriction to Liberation' by Milani Lawrence is a thought-provoking exploration of the impact of generational trauma within the context of the Sri Lankan civil war.

The exhibition raises awareness about the erasure of cultural identities resulting from this traumatic period in history. By adopting a creative and immersive approach, the exhibition provides a safe space for individuals to reflect, resonate, and educate themselves on this

Pottu: A Journey of Constriction to Liberation

important topic.

The exhibition's focus is to narrate a collective story and illustrate the journey of healing from constriction to liberation. Each exhibit conveys the intricate process of navigating through confusion and denial, leading to the embrace and reclamation of cultural pride.

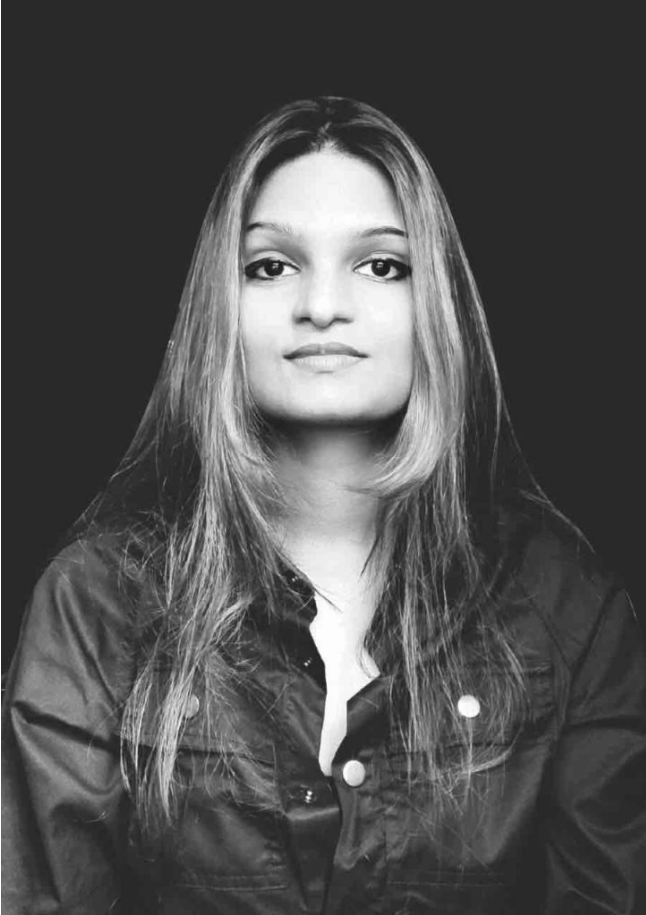
The designer's personal journey serves as a powerful narrative thread, guiding viewers through the stages of clarity and self-discovery.

With the primary goal of creating awareness on the topic of generational trauma and cultural erasure, "Pottu" invites visitors to embark on a transformative journey of introspection and understanding. By exploring themes of identity, resilience, and cultural heritage, the exhibition seeks to spark meaningful dialogue and promote healing within the community.

April 30 - May 1, 2024.

JDA Perera Gallery. Time: 10am-6pm.

Pottu: A Journey of Constriction to Liberation



Milani Lawrence.

Pottu: A Journey of Constriction to Liberation



Patchwork embroidery.



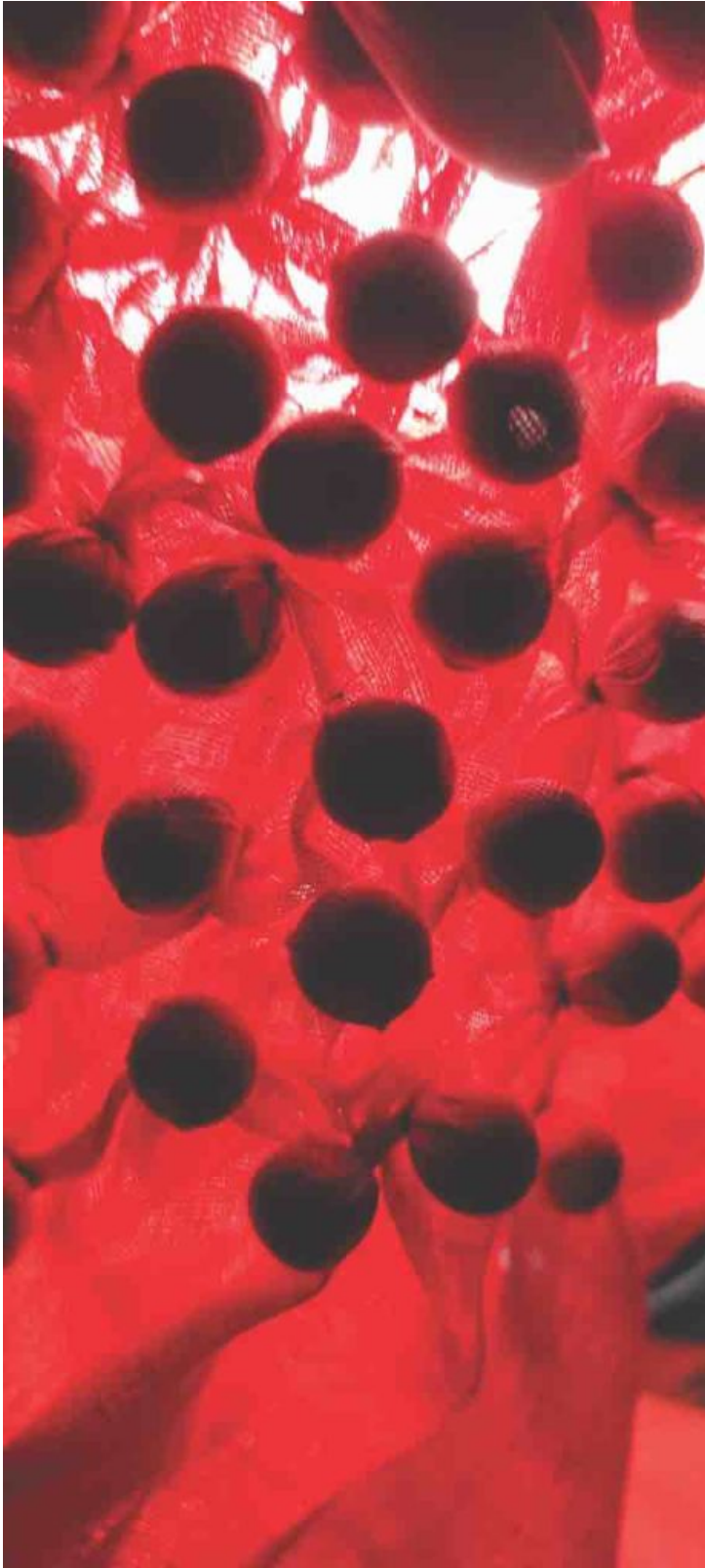
Textile dyeing work.

Pottu: A Journey of Constriction to Liberation



Project mood board.

Pottu: A Journey of Constriction to Liberation



Experimental textile manipulation work.



Embroidery work - Utilising unconventional materials with high symbolic value for embellishment details.