

RIFF HIKKADUWA VIBRANT LUXURY

Posted on



Unbridled vistas of the ocean are transcendent, with altering imagery from the sublime to the hypnotizing, the theatrics that open out afar as one lounges on the rooftop space at Riff Hikkaduwa are truly phenomenal.

Words Jennifer Paldano Goonewardane. | Photographs Eresh Weerasuriya.

With sharp and crisp lines, it is its simplicity and unfazed demeanor that gives Riff Hikkaduwa personality and sophistication. In design, Riff Hikkaduwa is a remarkable construction befitting to be described as the 'haute' of the Island's hotels, and worthy of being discoursed as unique architecture. A departure from the familiar and the traditional, this 32 rooms, two suite hotel in the South that opened in 2018 is modernist in architectural design, featuring a combination of artistic expression and functionality; clear horizontal and vertical elements with meticulous focus on the interior spaces, while reinforcing the open concept that blends beautifully with the structure's existing natural surroundings.

So, naturally, the form of straight lines is void of fussy adornments, and focuses on

offering a rooftop terrace that provides scenic views along the ocean front, while inside, the art deco is a marvel, defined by wide hallways illuminated to elicit positivity and vibrancy, and definitely a distinct air of elegance and luxury. As in modern architecture, which has come to be identified with the use of selected material, the interior of Riff Hikkaduwa is distinguished by the recurring characteristic of flipped doors and windows made of wood, featured in the lobby as well as in the guest rooms, another fillip to an ultimate guest experience of opening up to the ocean and its surroundings.

Architect Vinod Jayasinghe's minimalist approach to the building gives out peaceful and stress-free vibes and is supported by a construction ethic that ensures strength and solidity, hence the interior of the hotel floor is built with limestone.



Riff Hikkaduwa carries the unique tag of being a 'design hotel'....

In addition, the hotel also promotes eco-friendly practices through its 'Go-Green' initiative, thereby ensuring an uncompromised carbon footprint. Prominent amongst its practices is its zero plastic policy. Designed and built to the desires of Gamini Abeywickrama, Chairperson, Basilur Holdings, Riff Hikkaduwa carries the unique tag of being a 'design hotel', because its furniture, light fittings and paintings had all been commissioned exclusively for the hotel. Just as much as the hotel's aesthetics ignite a sense of excitement to stay-in, the services, including the conveniences, such as a butler service, in-room dining, minibar, 24-7 room service, together with free unlimited internet service, laundry service, a complementary tea capsule, air conditioning, rain shower and bath tubs,

TV, Android and iOS sound docking system, and complementary drinking water are the perfect accompaniments for a carefree holiday buttressed by the palms and the ocean. Every room opens to the beauty of the sun and the sea. The two suites each have a unique view of the ocean. The Riff Design Suite has two bedroom suites with the addition of connecting Deluxe Ocean View rooms. Beyond the building speaking for itself, the ambiance in the restaurants is the ideal setting to savor the culinary culture of diverse communities from around the world, with the added convenience of a contemporary all-day dining restaurant serving an internationally flavored breakfast and an extensive menu. It is basically a geography of tastes, from our very own authentic and rich Sri Lankan cuisine to Western and Asian tastes, accompanied by the deliciously aromatic assortment of pastries; and what better way to end a heartwarming gastronomic journey than with selected connoisseur-worthy coffees and teas.

Providing a breathtaking view of the Indian Ocean, visitors can opt to enjoy the sunny-side of the day or the cool breeze of the night at the rooftop bar, which, whatever the time of day ensures a laidback setting to the getaway.

Variety at Riff Hikkaduwa continues with the True Blue restaurant that serves exquisite Japanese delicacies prepared by the hotel's specialty Japanese chef. Providing a breathtaking view of the Indian Ocean, visitors

can opt to enjoy the sunny-side of the day or the cool breeze of the night at the rooftop bar, which, whatever the time of day ensures a laidback setting to the getaway.

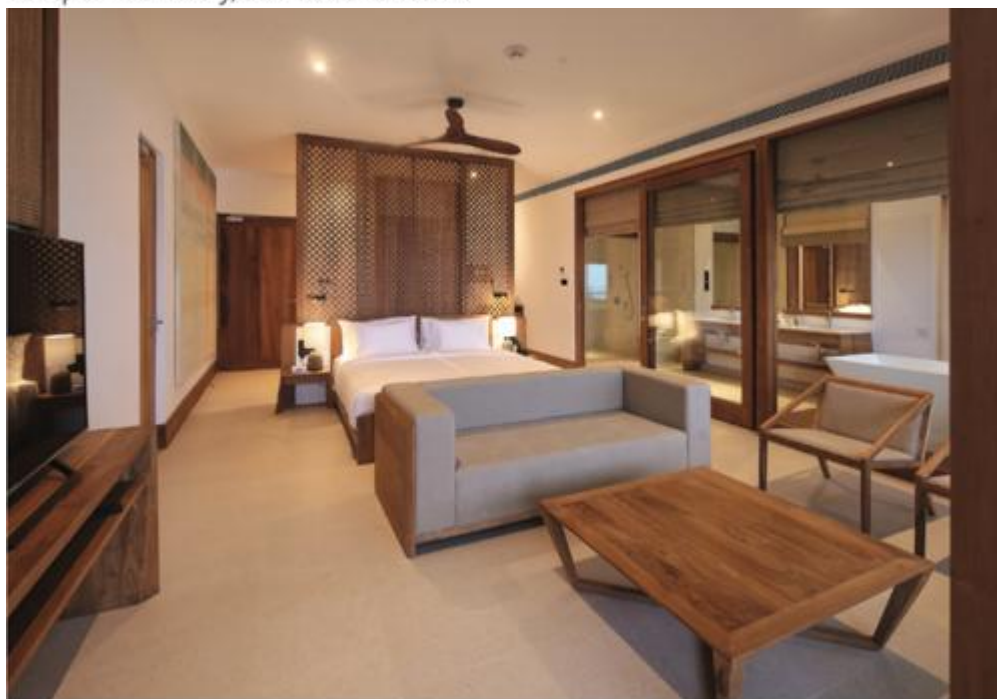
Of course any escape from the daily routine into the midst of luxury and heterogeneous cuisine must be accompanied by some activity as well; ideally a dip in the salt-water infinity swimming pool or a workout at the hotel gym or even a stroll at sunrise or sunset will give the much desired guilt-free completeness sought from retreating into this blissful sanctuary. Crown it all with a de-stressing and detoxifying routine at the Balinese Spa, another experience that will be soothing to an already relaxing holiday.

In the days of confinement, when the soul yearns to relish in the somberness and the energy of the outdoors, Riff Hikkaduwa is easy to fall in love with.

870 Colombo-Galle Main Road Hikkaduwa
(+94 91) 227 4440 reservations@riffhikkaduwa.com riffhikkaduwa.com



The epitome of luxury, the Presidential Suite.



Design Suite coupled with endless views and amenities for a relaxing holiday.



Deluxe room furnished with subtle tones and comfortable spaces.



Watch the live action.



Unwind in the spacious and stylish lobby bar and lounge.



work out at the well-equipped gym.



Indulge in breathtaking views of the coastal paradise from the rooftop bar.



Riff Hikkaduwa is a beach front property providing the ideal surroundings for a holiday.